

### *Group Clinics*

Clinic descriptions:

#### *Putting Clinic*

Posture, alignment, ball position, eye line position & distance control. 1 hour \$60 pp

#### *Around the Green Clinic*

Set up, technique and club selection when chipping close to the green. 1 hour \$60 pp

#### *3 Clubs*

Focus on your Driver, wedge & putter to hit more fairways and greens! 99 minutes \$99 pp

#### *Schedule*

April 28 - Saturday

Putting 9:00 - 10:00

Around the Green 10:15 - 11:15

May 21 - Monday

Putting 5:30 - 6:30

Around the Green 6:45 - 7:45

#### *3 Club Clinics*

May 5 - Saturday 9:00 - 10:30

June 4 - Monday 6:00 - 7:30

A minimum of 4 is required per group, maximum 12. If these don't fit your schedule contact the shop to form your own group.

### *Join Our Masters Program*

*Mature golfers (50+)*

*Our 5 week programs include:*

*Weekly clinic, lunch & 9holes w/golf cart*

*\$149 per person*

Clinics will cover the full swing, short game & uneven lies.

Programs will run 5 consecutive weeks beginning:

May 1—Tuesdays    May 9—Wednesdays

June 12—Tuesdays    June 20—Wednesdays

July 31—Tuesdays    Sept 6—Thursdays

Clinics will begin at 10:30 am each week followed by lunch & 9 holes. If you are unable to attend a given week you may attend an ongoing clinic if space permits. Rain checks or refunds not permitted.  
6 to 12 participants per session.



## *The Golf Academy at the Windham Country Club*

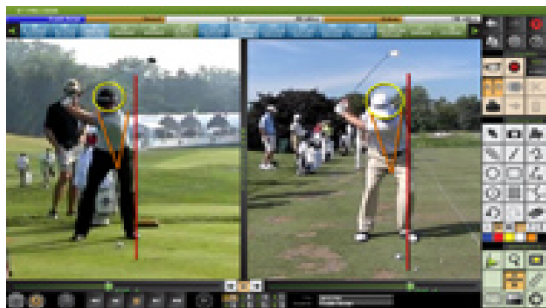
**Open Year round**

**One Country Club Road  
Windham, NH 03087  
(603)434-2093**

**www.windhamcc.com  
Facebook: windhamcountryclub  
Twitter: windhamcc**



The Academy at the Windham Country Club offers the V1 Professional Digital Coaching System, the #1 video analysis software in sports. The preferred system of Teaching and Touring Professionals, V1 allows the professional to view, analyze and diagnose your swing faults from different angles. Four strategically placed cameras provide feedback on your posture, swing path, swing plane, impact position and many other swing elements. Instant playback, comparison to the pros and frame by frame pictures are great tools for visual learners or to understand their swing and changes being addressed.



**Marc Spencer, PGA Professional**

A PGA member with a strong background in golf instruction, Marc has instructed over 25,000 private, semi-private and small group lessons. He has taught golfers of all ages, genders and skill levels, including Junior Collegiate players that have won on the local, state and national levels. An accomplished player, his top 10 finishes include the Massachusetts Open Championship in 2001, 2002 and 2007. Voted New Hampshire Chapter “Teacher of the Year in 2007”.

**2012 Instruction Rates**

Adult	Private	Semi Private (pp)
30 minutes	\$70	\$50
Series of 3	\$190	\$135
<b>60 Minutes</b>	<b>\$130</b>	
Series of 3	\$375	
Series of 5	\$600	
Series of 10	\$1100	
<b>Junior</b>	<b>Private</b>	<b>Semi Private (pp)</b>
30 minutes	\$60	\$40
Series of 3	\$165	\$105
60 minutes	\$105	
Series of 3	\$295	
Series of 5	\$475	
Series of 10	\$900	
<b>Playing lesson</b>		
	<b>Private</b>	<b>Semi Private (pp)</b>
1 hr	\$200	\$125
45 minutes		

**Joanne Flynn, PGA Professional**

A PGA member since 1994, Joanne has instructed golfers of all ages and abilities. Voted Junior Golf Promoter of the Year by the New Hampshire Chapter of the PGA in 2002 & 2008, she has long been dedicated to providing juniors an opportunity to participate in the game. She is also TPI certified. In conjunction with Northeast Passage, she has developed a program that introduces individuals with disabilities to golf and provides adaptive clubs and golf carts for their use.

**2012 Instruction Rates**

Adult	Private	Semi Private
(pp)		
30 minutes	\$60	\$45
Series of 3	\$165	\$125
Series of 5	\$265	
\$200		
60 minutes	\$110	
Series of 3	\$300	
Series of 5	\$475	
<b>Junior</b>	<b>Private</b>	<b>Semi Private</b>
(pp)		
30 minutes	\$50	\$35
Series of 3	\$130	\$90



TPI Evaluation- Assessing the “total picture” of your body and identify flexibility issues or weaknesses that lead to swing flaws.

Evaluation w/swing analysis \$159